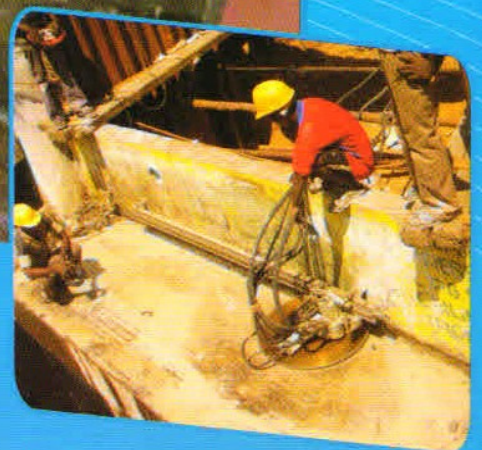




A.J ASSOCIATES



- ④ *Diamond drilling and cutting Using **HILTI** Systems*
- ④ *Drilling and fixing Chemical and Expansion Anchors*
- ④ *Dismantling heavy Concrete Mass **Foundation Breaking***
- ④ *Repair & Rehabilitation of Multi story Buildings*
- ④ *Specialized in **Under Water Cutting & Drilling***

BRIEF HISTORY

A.J.Associates is a Civil Engineering Company & one of the main applicators for **HILTI** Products. **HILTI** is the world leader in fixings for the Construction & Engineering Industry & has developed the expertise over many years of research & development. We are the leaders in the field of Diamond drilling & cutting, Fixing chemical & expansion anchors & Demolition of RCC structure. Quality, innovation & extensive applications knowhow, executing the job in a record time, resulting from a close customer contact are our main strengths.

We are also specialized in Under Water cutting, Drilling & applications. This company was registered in Chennai in the year 2002. Since its inception we work with high profile clients Viz., Satish Dhawan space centre - Sriharikota, Nuclear Power Corporation - Kudankulam, Atomic power plant - Kalpakkam, DP World - Chennai Port trust and Southern Railway.

From **A.J.Associates** you can expect a total commitment, reliable service and the latest technology and risk free decisive contribution to your magnificent projects. With us you can save your valuable time and money at each step. Our first priority is to remain customer's best partner at construction phase of a project. As **Hilti** applicator we are committed to making it easy for you to contact us. One phone call and you will be connected to one of our highly trained engineer for professional advice and estimate, order placing and shipping, Technical support and executing with a team of committed professionals.



TECHNOLOGY/EQUIPMENT/TOOLS

Hilti make wallsaw D-LP 32 is a Heavy duty and High performance Wall saw & wire saw system.

Hilti make Core Drilling machineries various ranges from Dia 28mm to Dia 700mm depth Up to 2mtrs.

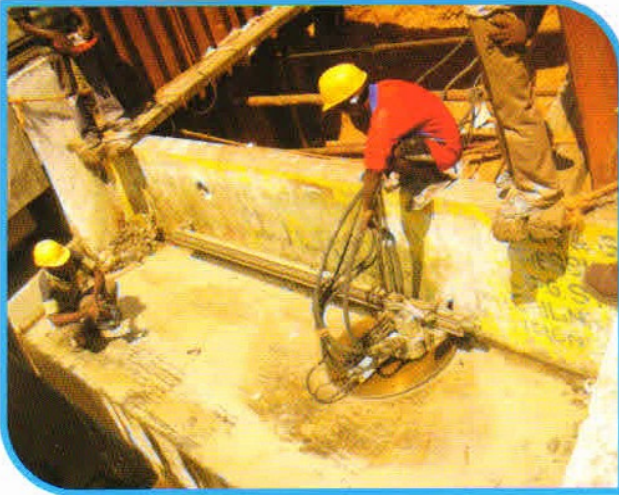
Bosch make Dismantled equipment ranges viz. 11 kg, 16 kg & 27 kg.

Hitachi make hydraulic heavy breaker

Hilti make combi drill hammer ranges from 4mm to 40mm depth Up to 1200mm.

WALL & WIRE SAW CUTTING (DIAMOND SAWING)

This is suitable for new construction & old building renovation. **Hilti** DLP 32 is Heavy duty & high performance wall saw system. Large penetrations up to 750 mm depth. Slitting concrete, Rock & precise cutting of metals: Dustless slitting operation. Structural integrity protection is ensured with less Vibration.



DRILLING & GROUTING OF REBARS

Combi'hammer Drilling machine is used for drilling holes 4mm to 40 diameters & maximum depth of 1.2 mtr. For various applications in construction Hilti chemical is used for Fixing the rebar which ensures Top quality for unequalled service life. * Loading of rebar is done as per clients requirements.



RCC, MASS FOUNDATION/ROCKS BREAKING

New **Hilti** TE 1000 and Bosch chipping machine the latest breaking Technology. AVR - Active vibration reduction systems, Ideal for Building renovation work., repairs & plumbing installation .Hitachi EX 200 with moul point chisel suitable for mass building / Bridges demolition with less noise & vibration.



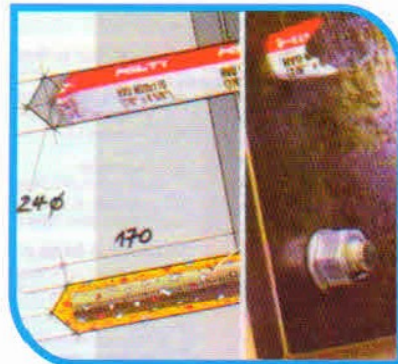
DIAMOND CORE CUTTING

Holes are simply drilled without any vibration & precise drilling in concrete with reinforced steel. Rebars are cut through without any difficulty. Drilling without stressing the material drilled with less noise thus ideal for use in occupied building. **Drilling Range of 20mm dia to 700mm and depth of 2 meter.**



ANCHOR FIXING

Fastenings with bolt & Threaded rods for plumbing, heating, air-conditioning and ventilation installations, pipe suspension, air ducts etc., For securing channels, rails, plates, brackets ans



UNDER WATER CUTTING & DRILLING

HILTI Diamond wire saw is a non-explosive, non-destructive form of controlled demolition that leaves remaining structures safely intact. Widely used in the building construction, make cutting for houses, bridge, big post, cement pipes and under water buildings, having the following features.

1. Cut and back out large area and unequal reinforced concrete construction.
2. Cutting direction to be at will.
3. Work under water and structure space.
4. Low vibration, low noise, no dust.
5. Control cutting at a far distance

Why under water cutting?

- Fast - to keep pace with your outage and construction timeline,
- Flexible - to access restrictive jobsites without disrupting regular operations,
- Precise - to ensure surgical accuracy for your retrofitting, reengineering and reconstruction projects.

Typical applications include:

- Underwater cutting for bridge, dock, dam, wharf and pier modifications;
- Refinery turnarounds and power plant retrofitting;
- Line modifications at industrial plants and process facilities such as steel mills / steelworks, paper and pulp plants, cement plants and mineral processing facilities;
- Maintenance and capital projects at water treatment plants, sewage treatment plants / wastewater treatment plants (WWTP);



REPAIR & REHABILITATION OF MULTI STORY BUILDINGS

A.J.Associates is quite actively involved in repairs and rehabilitation of concrete structures. The various stages in the process are.

- * Assessment survey of the condition of the structure.
- * Find out the cause of deterioration.
- * Select the suitable methods for repair of Column, beams, girder bridge & Foundations.



WE ARE PROUD TO BE ASSOCIATED WITH OUR VALUABLE CUSTOMERS



Destruction for Construction

A.J ASSOCIATES

34/18, 3rd Street, Jeganathapuram,
Chetpet, Chennai - 600 031.

Off No : +91- 44 - 64531913 / Fax No : +91-44- 28361518

Office Mobile : +91 9841640091, Mobile : +91.9381011517.

E-mail : admin@ajassociate.com / E-mail : purchase@ajassociate.com

E-mail : abraham_aj1970@rediffmail.com

www.ajassociate.com

Applicators Of **HILTI** Systems

HILTI

www.ajassociate.com

fischer
FIXING SYSTEMS